

CoolLift®



Benefits



MODEL SHOWN
CTA43

IMPROVE ACCOUNT EFFICIENCY UP TO 50%

- Higher capacity loads mean fewer trips from truck to store
- Orders pre-picked and loaded in route sequence eliminate driver pick time

POTENTIAL DRIVER TURNOVER REDUCTION OF 30% OR MORE

- Eliminating driver picking lowers workers' compensation claims up to 32%
- More cases per roll and fewer product touches reduce driver fatigue
- Warehouse order-picking reduces driver exposure to inclement weather

LOWER FLEET OPERATING EXPENSES UP TO 25%

- Delivering more products on fewer trucks reduces fleet up to 25%
- Combining C-Store and grocery deliveries increases fleet flexibility and reduces assets
- Changing to end-load trucks reduces maintenance costs
- Fewer trucks on the road cuts fuel costs

INCREASE CUSTOMER SATISFACTION

- Order staging creates faster, easier check-in process and less congestion
- Pre-building orders improves order accuracy
- Increasing driver retention provides greater, long-term customer relationships

Features



- More cases per transport increase productivity
- Hydraulic dual wheel disc brake system
- Center tilt design navigates easily over thresholds and bumps
- 360° maneuverability in store aisles and most coolers
- Hydraulic lift and propulsion models feature a 24-volt battery system that may be charged from a standard wall unit or on board a delivery vehicle
- Non-marking, 6"x2" thermoplastic rubber casters
- Three point deck support increases pallet stability

Patent - www.magliner.com/patents

SPECIFICATIONS Hydraulic Lift Models

P/N	SIZE (L x W x H)	WEIGHT (LBS.)	CAPACITY (LBS.)	CASE LOAD
CTA43	56" x 19" x 62"	230	1,200	40
CTA48	56" x 19" x 62"	230	1,350	45
CTA53	56" x 19" x 62"	222	1,500	50

PROPULSION MODELS:

- Propulsion option provides forward and reverse speed at 2 mph
- Interlock button on throttle minimizes accidental activation of propulsion system

SPECIFICATIONS Models With Propulsion

P/N	SIZE (L x W x H)	WEIGHT (LBS.)	CAPACITY (LBS.)	CASE LOAD
CPA43	63" x 19" x 62"	346	1,200	40
CPA48	63" x 19" x 62"	346	1,350	45
CPA53	63" x 19" x 62"	338	1,500	50

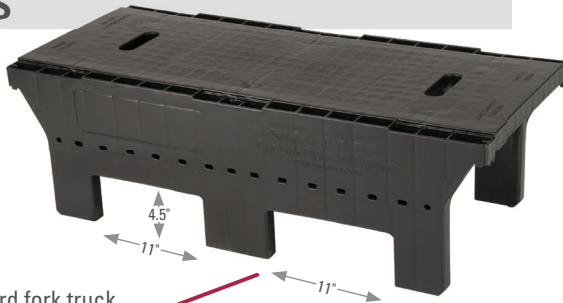
MANUAL LIFT MODELS:

- Designed for lighter-duty applications
- Ideal for in-store merchandising

SPECIFICATIONS Manual Lift Models

P/N	SIZE (L x W x H)	WEIGHT (LBS.)	CAPACITY (LBS.)	CASE LOAD
CMH43	61" x 19" x 65"	177	1,000	33

PALLETS



Fits all standard fork truck and electric pallet truck tine widths.

- Empty pallets interlock, optimizing warehouse and delivery vehicle storage space inside delivery vehicle
- Pallets self-align and interlock with the Coolift deck when raised for safe, secure product movement during delivery
- Pallets integrate with warehouse automation systems, and warehouse personnel can pick and load/unload multiple pallets simultaneously using the optional pallet adapter available for forklifts and walkie riders

SPECIFICATIONS

P/N	SIZE (L x W x H)	WEIGHT (LBS.)	CAPACITY (LBS.)	CASE LOAD
309344	43" x 18.5" x 13.5"	25	1,200	40
309345	48" x 18.5" x 13.5"	29	1,350	45
309346	53" x 18.5" x 13.5"	32	1,500	50

CURB RAMP



P/N
RDCR

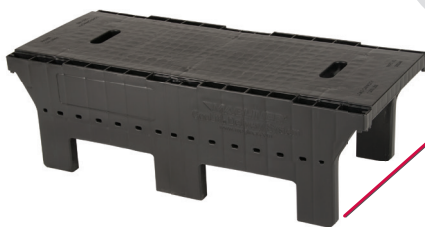
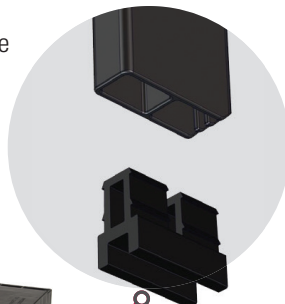
- Gain entry to building when an access ramp is unavailable
- Sturdy, lightweight aluminum construction is easily handled by one person
- Twin-tooth deck design provides traction in either direction for safer delivery

SPECIFICATIONS

Capacity	3,000 lbs.
Usable width	26"
Overall width	29"
Overall length	44"
Height range	9"
Weight	43 lbs.

PALLET EXTENSIONS

- Components made of impact-resistant high-density polyethylene (HDPE) for years of use
- Extensions firmly press-fit into pallet legs



SPECIFICATIONS

P/N	DESCRIPTION	WEIGHT (LBS.)
309722	for 43" pallets (309185 & 309344)	1.5
309723	for 48" pallets (309186 & 309345)	2.0
309724	for 53" pallets (309187 & 309346)	2.5

HANDLE OPTION

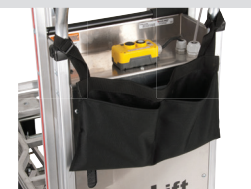


P/N
309330

WEIGHT (LBS.)
5.0

Lift assist handle provides additional leverage for maneuvering uneven tailgates and terrain.

ACCESSORY BAG



P/N
309256

WEIGHT (LBS.)
5.0

Perfect for hand-held computers and printers.

ERGO CO₂ CONTAINMENT RACK



Specifically designed to interface with any size Coolift pallet. No hardware required; rack legs slide into pallet slots.

SPECIFICATIONS Models With Propulsion

P/N	SIZE (L x W x H)	WEIGHT (LBS.)
309316*	45-3/4" x 18-1/2" x 41-3/4"	47.5

*Pallet not included. Ships complete with 8" E-Track strap.

Accessories

PALLET ADAPTER FOR USE WITH FORK TRUCK AND WALKIE-RIDER



- Rugged, heavy-duty steel construction
- Adjustable fork tine pockets accommodate both pallet jacks and fork trucks
- Minimum of 1" gap between fork pockets when loaded stops stretch wrap from rubbing
- Pallets rest against fork truck tines (or pallet jack battery box) so a separate "back stop" is not needed



- 1-1/2" offset design allows each pallet to be set down individually



- Retracting leg option available for easy storage of the pallet adapter when using a walkie rider



- Permanently attached 1/4" safety chain fastens easily to fork truck
- 1/2" gap allows proper alignment of pallets built with product overhang

SPECIFICATIONS

P/N	WEIGHT (LBS.)	CAPACITY (LBS.)
309190 adapter for 43" and 48" pallets	335	2,400 using two 43" pallets 2,700 using two 48" pallets
309190L 43" and 48" pallet adapter with legs	371	2,400 using two 43" pallets 2,700 using two 48" pallets
309214 adapter for 53" pallets	350	3,000 using two 53" pallets
309214L 53" pallet adapter with legs	438	3,000 using two 53" pallets

COMPATIBILITY

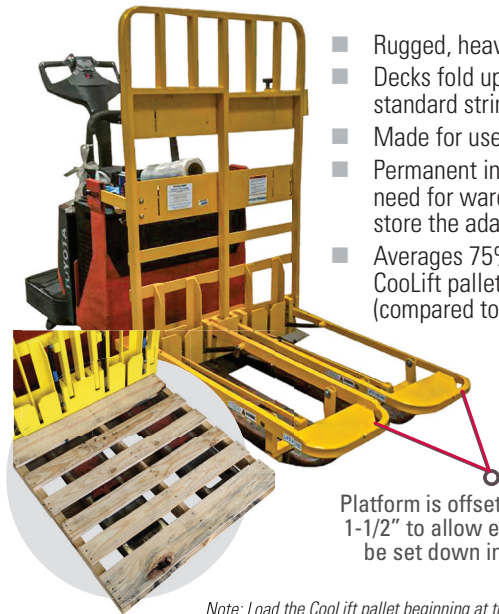
FORK LENGTH	309190/309190L		309214/309214L
	43" PALLET	48" PALLET	53" PALLET
36"	✓	Do Not Use	Do Not Use
42"	✓	✓	✓
48"	Pallet Jack Only	✓	✓

Patent - www.magliner.com/patents

COLLAPSIBLE PALLET PICKING ADAPTER FOR WALKIE-RIDERS ONLY

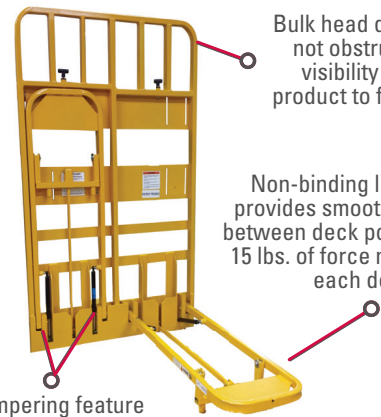
Increase warehouse efficiency and save valuable floor space by using the same pallet moving equipment for both Coolift and conventional pallets.

- Rugged, heavy-duty steel construction
- Decks fold up when not in use for handling standard stringer pallets
- Made for use with any size Coolift pallet
- Permanent installation eliminates need for warehouse space to store the adapter
- Averages 75% less time to change between Coolift pallet and conventional pallet modes (compared to removable pallet adapter models)



Platform is offset vertically by 1-1/2" to allow each pallet to be set down individually.

Note: Load the Coolift pallet beginning at the bulkhead and cube outward to avoid tipping.



Bulk head design does not obstruct driver visibility or allow product to fall through.

Non-binding link system provides smooth movement between deck positions - only 15 lbs. of force needed to lift each deck.

Dampering feature controls deck lowering.

SPECIFICATIONS

Overall Depth (collapsed)	2-1/2"
Height	60"
Width	37-1/8"
Weight	220 lbs.
Capacity (lbs.)	2,400 using two 43" pallets 2,700 using two 48" pallets 3,000 using two 53" pallets

COMPATIBILITY

FORK LENGTH	43" PALLET	48" PALLET	53" PALLET
36"	✓	✓	Do Not Use
42"	✓	✓	✓

Patent - www.magliner.com/patents