

POWERED LIFTING HAND TRUCK SERVICE GUIDE

PARTS LIST

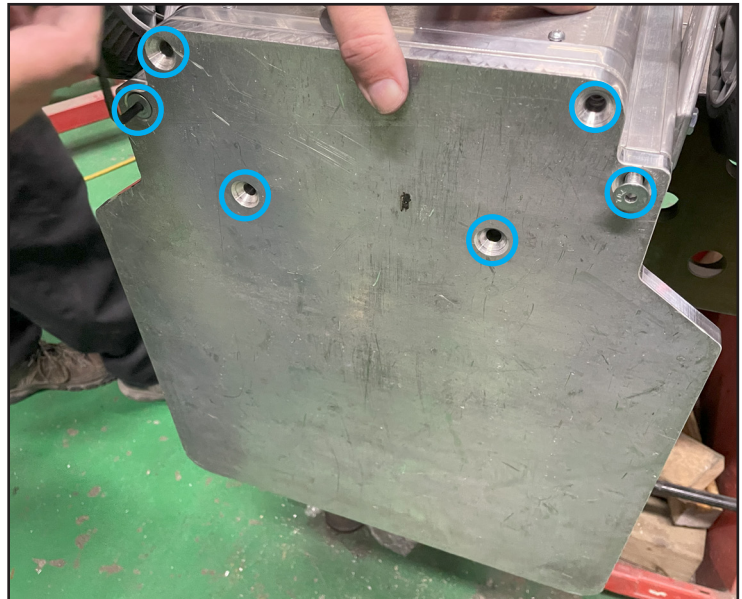
DESCRIPTION	PART NO.	QTY
Yoke Assembly	521064	1
Carriage Roller	521365	4
E-clips	221018	4
Drive Belt	521384	1
Cotter Pin	81077	2
Chassis Cover Plate Screws	802020	4
Dry-lubricant PTFE	521200	1

TOOLS REQUIRED

- 3/16" allen wrench
- 3/32" allen wrench
- 1/4" allen wrench
- 9/64" allen wrench
- 3 mm allen wrench
- 3/8" wrench
- Torque wrench
- Phillips head screwdriver
- Flat head screwdriver
- Needle nose pliers
- Snap ring pliers
- Channel lock pliers

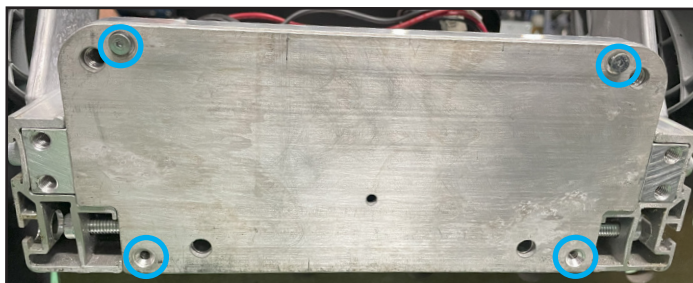
1

- a.) Remove lifting attachment
- b.) Remove the 6 nose plate bolts using a 3/16" allen wrench. The two 802036 center bolts are attached with nuts.



2

Using a 3/32" allen wrench, remove the 4 bolts attached to the bottom chassis cover plate. Remove plate.



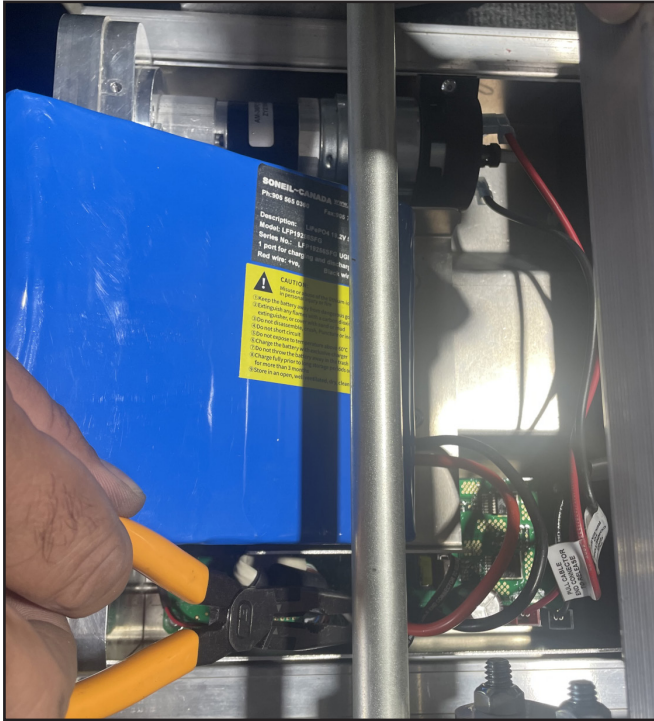
3

Using a phillips screwdriver, remove the 5 rear cover bolts and remove cover.



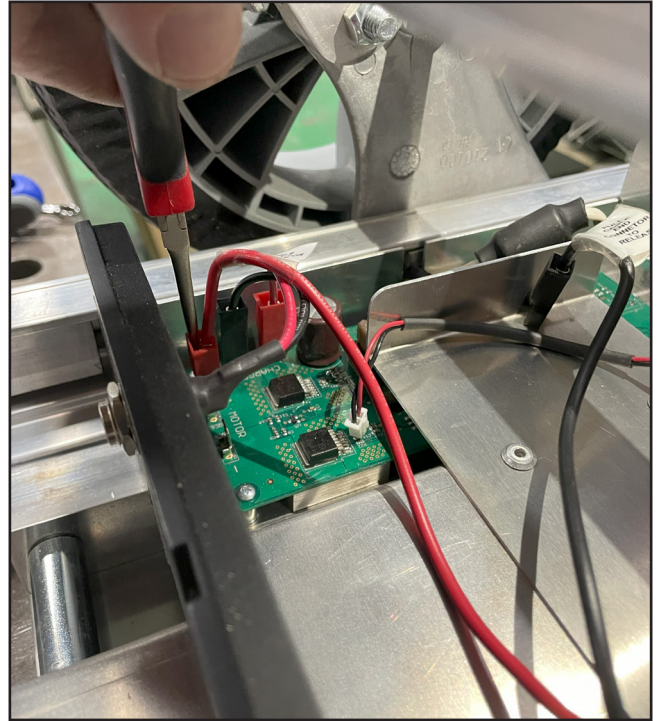
4

- a.) Using needle nose pliers, unplug all wires from battery.
- b.) Remove battery.



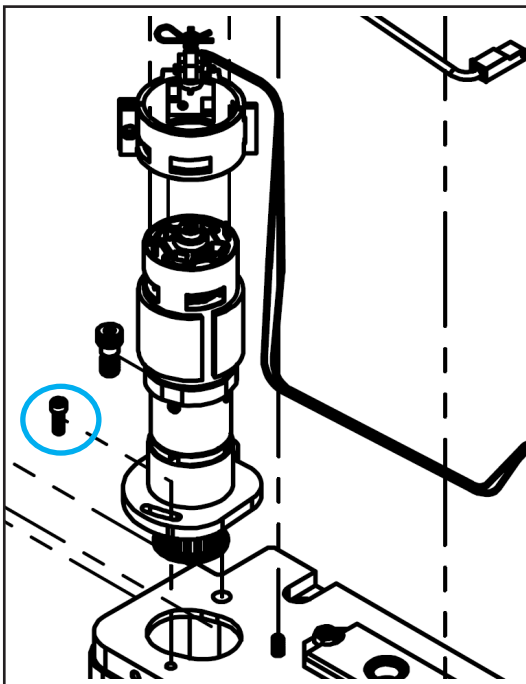
5

- Using needle nose pliers, unplug all wires from motor.
- Important: Make note of positive and negative connection sides.**



6

- Using a 9/64" allen wrench, loosen motor assembly screw to relieve tension on the belt. Do not remove the screw.



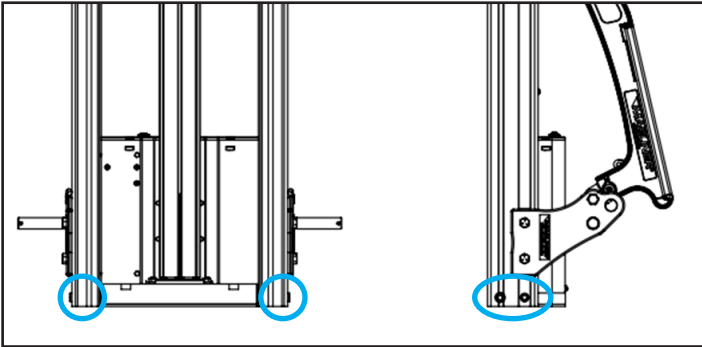
7

- Remove belt from gears



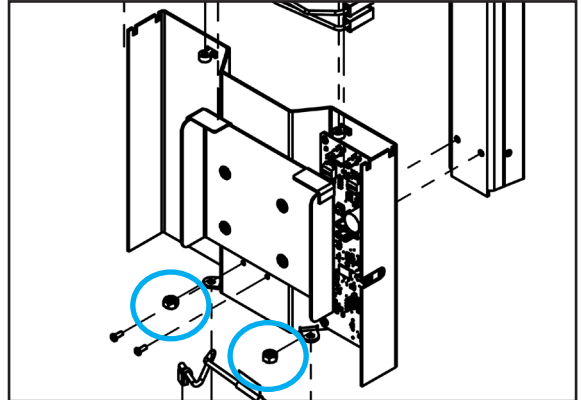
8

Using a 1/4" allen wrench, remove the 2 bolts installed into the bottom chassis through the right side rail. Repeat on the left side rail.



9

Using a 3/8" wrench, remove the 2 nuts at the base of the lift screw cover to fully release the bottom chassis.



10

- a.) Carefully hold the lift screw gear with a pair of channel locks.
- b.) Using a 3 mm allen wrench, unscrew set screw from the "Tighten" hole and screw into the opposite hole. Tighten screw until gear releases from lifting screw.



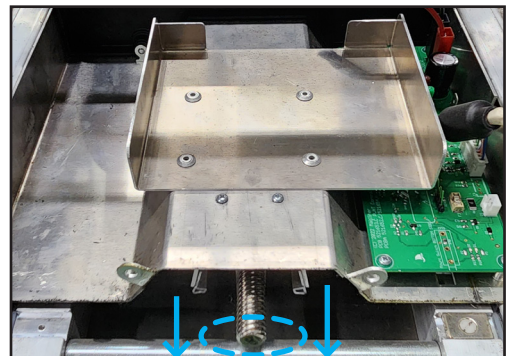
11

Remove bottom plate and motor assembly.



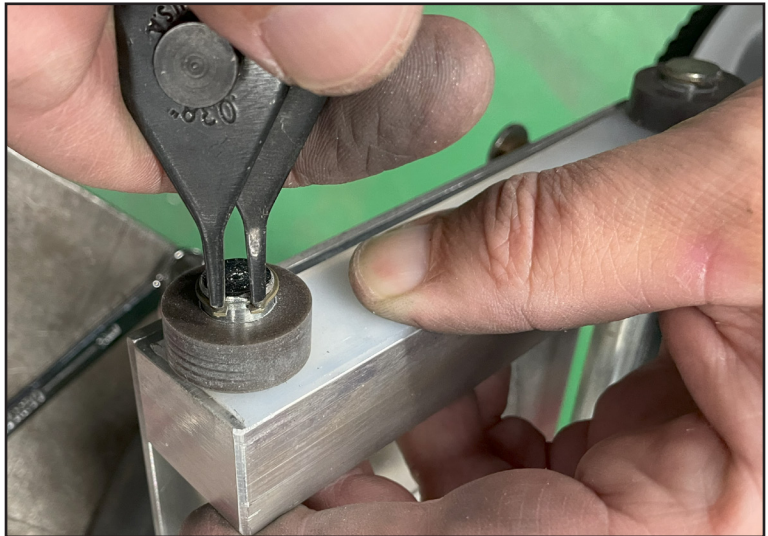
12

While pulling down on the lift screw, manually turn the lift screw clockwise until the carriage comes completely off of the screw.



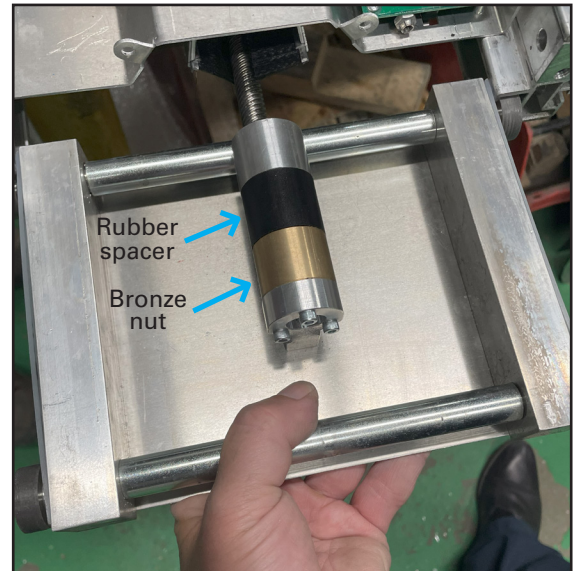
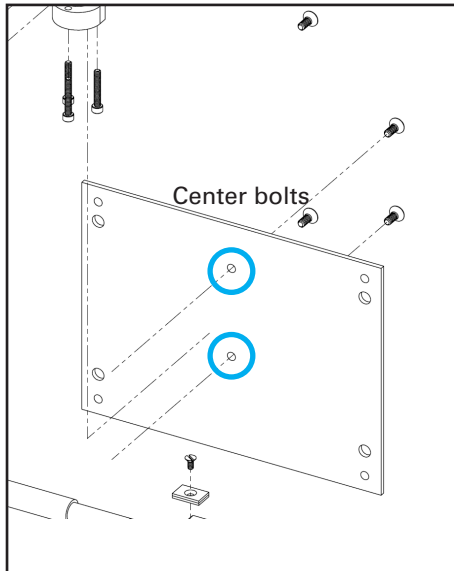
13

- a.) Using snap ring pliers, remove the e-clip to remove carriage roller. Replace with new roller and e-clip.
- b.) Repeat the same process on the remaining three rollers (Please be sure to replace rollers one at a time.)



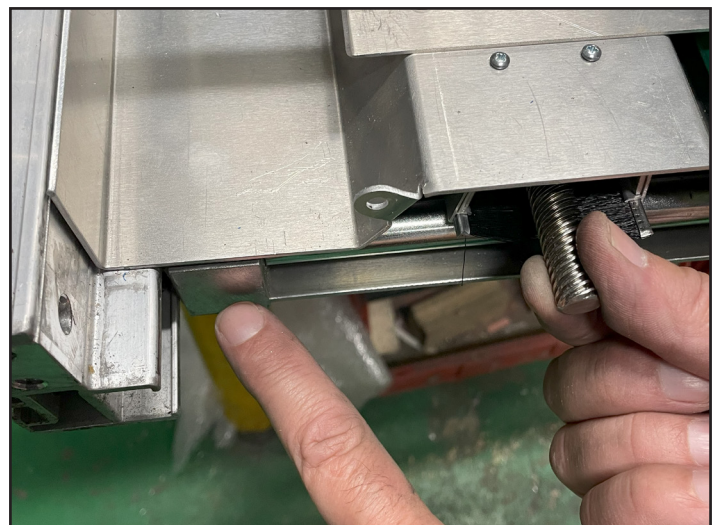
14

- a.) Using a 1/8" allen wrench, remove the 2 center bolts to release carriage yoke.
- b.) **Important: replace with new carriage yoke in the correct orientation!** The rubber spacer should be installed above the bronze nut.



15

- a.) While applying downward force to screw, apply upward force to the carriage and manually turn the lift screw.
- b.) Turn the lift screw counter clockwise until the carriage is even with the electrical box.



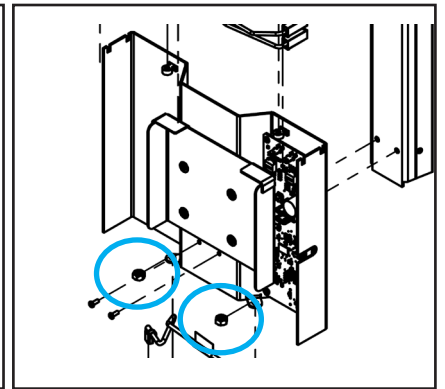
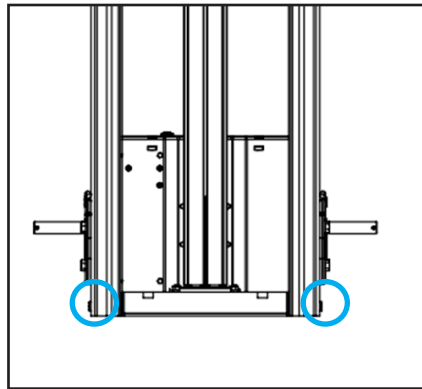
16

- a.) Wipe motor assembly bottom chassis with a clean rag.
- b.) While making sure the lift screw does not move up, slide bottom chassis onto lift screw.



17

- a.) Reinstall 4 siderail bolts from step 10. Tighten bolts to snug.
- b.) Reinstall carriage nuts from step 10. Tighten bolts to snug. Do not overtighten bolts.



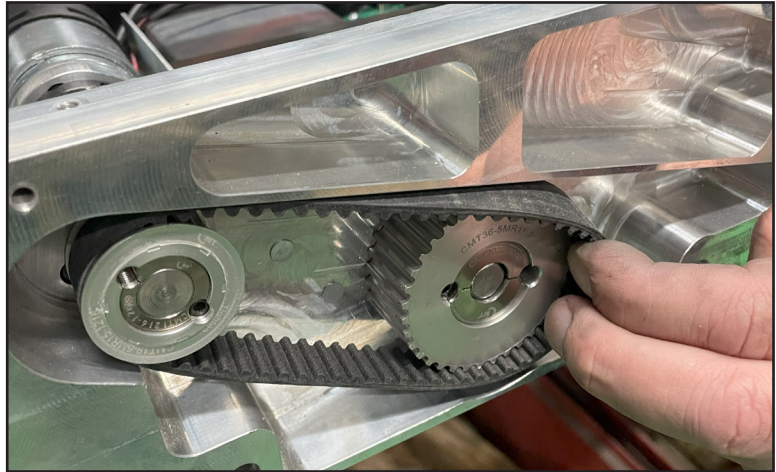
18

- a.) Unscrew the set screw on the main gear and screw it into the hole labeled "Tighten".
- b.) Place main gear onto lift screw. Tighten the gear until the brass collet is flush with the bottom of the lift screw.



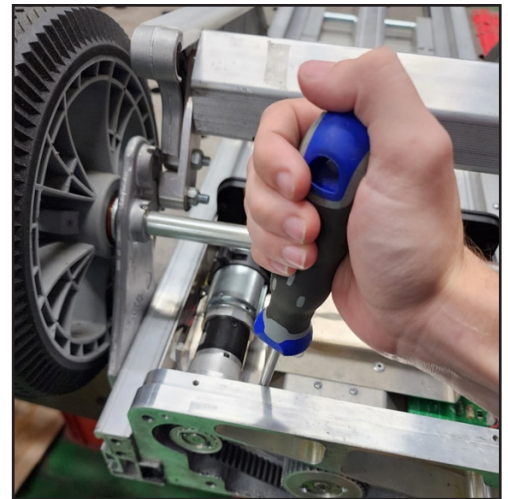
19

Install the new belt around the small gear. Install the opposite side of the belt around the larger gear.



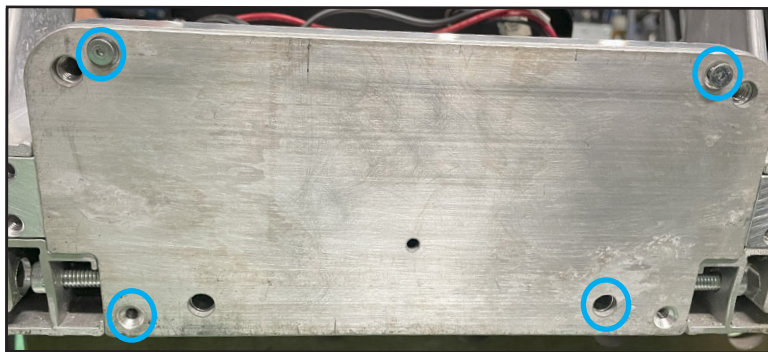
20

- a.) Use a screwdriver to push the motor mounting plate to tension the belt.
- b.) While applying pressure to the screwdriver, tighten the bolt to lock the motor position
- d.) Check belt tension. The belt should not deflect more than 1/8"



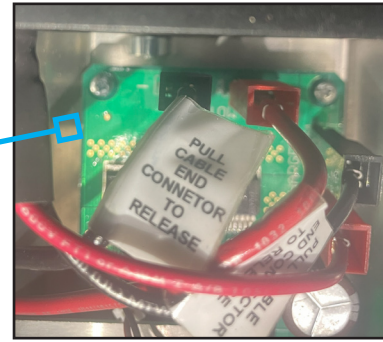
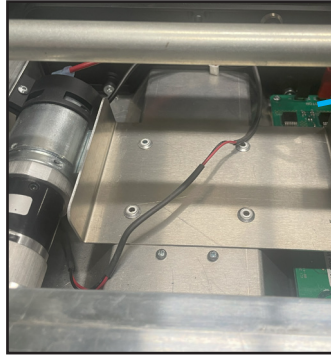
21

Reinstall bottom chassis cover plate from step 2.



22

- a.) Reconnect wires to motor.
- b.) Reinstall battery and reconnect wires.



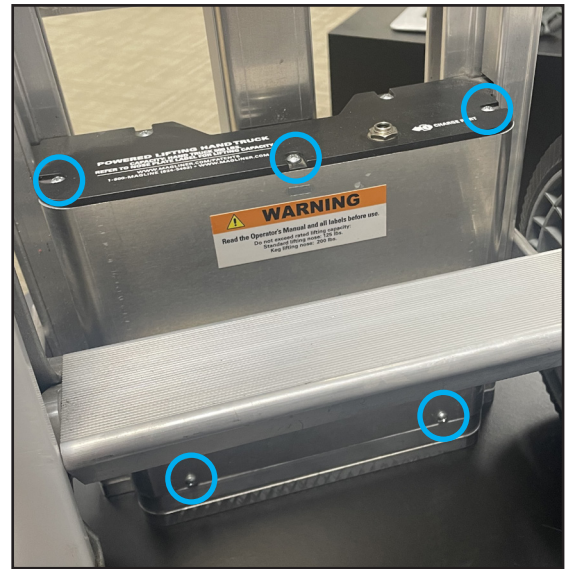
23

Reinstall bottom nose plate from step 1.



24

Reinstall rear cover from step 2.



25

Power on the unit. Test the lifting operation. Apply dry lubricant to lifting screw while operating. Power off the unit.



Magline, Inc.

1205 W. Cedar Street • Standish, MI 48658 USA
1-800-MAGLINE (624-5463) • (989) 512-1000 (outside U.S. & Canada)
www.magliner.com