

# PROPULSION CONTROLLER REPLACEMENT KIT

## PARTS LIST

DESCRIPTION	PART NO.	QTY
Propulsion Controller	63092	1
Cable Assembly / Clutch Diode	64128	1
Propulsion Controller Wire Harness	64119	1
Positive Cable	64036	1
Negative Cable	64123	1
Terminal Ring	61112	3
Mounting Plate	309899	1
Phillips Screw, 10-32, 1" Long	80083	2
Hex Screw, 8-32, 1" Long	800045	2
Controller Wire Loom	62121	1

## TOOLS REQUIRED

- #1 PHILLIPS SCREWDRIVER
- #2 PHILLIPS SCREWDRIVER
- #9/64 HEX SCREWDRIVER
- #T-30 SCREWDRIVER

1



Detach the battery charger by removing the two exterior screws on the right-hand side of the Coolift. Save the screws for reinstallation.

2



Unplug all wires from the existing controller and remove the wire loom.

3



a.) Remove the two 800045 screws.  
b.) Remove the controller.

4

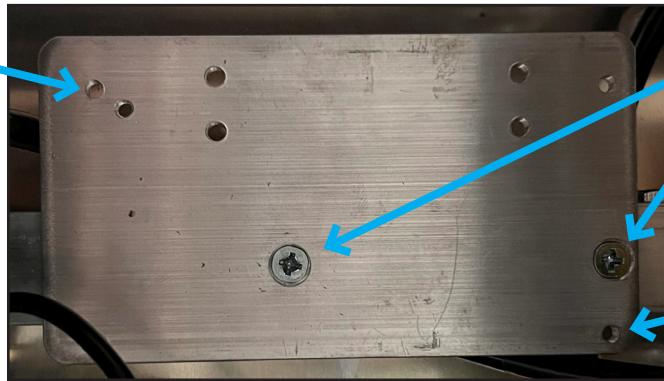
309828



Remove the 309828 mounting plate (if installed)

5

Mounting Hole

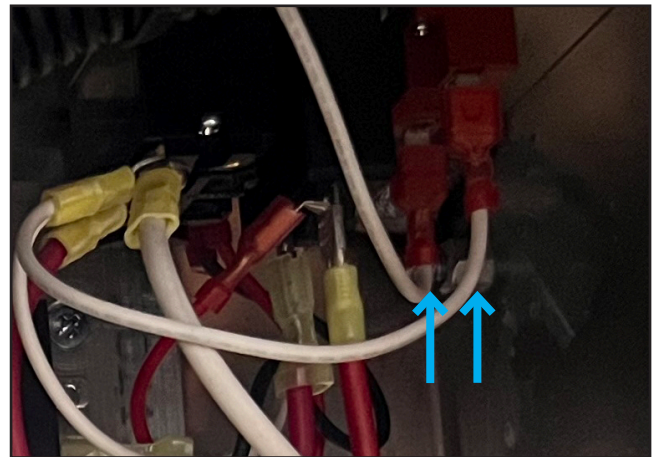
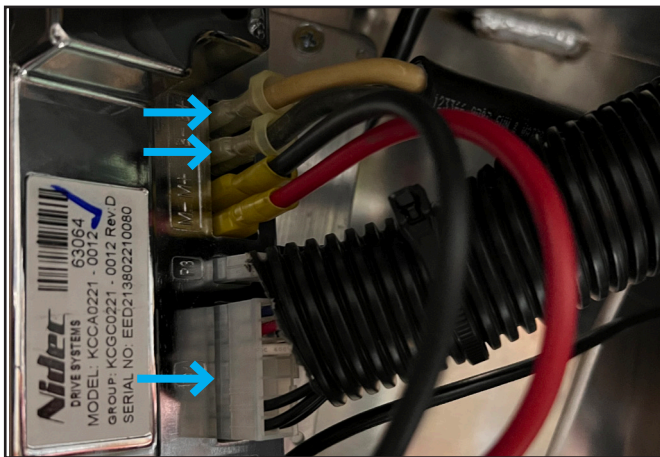


80083

Mounting Hole

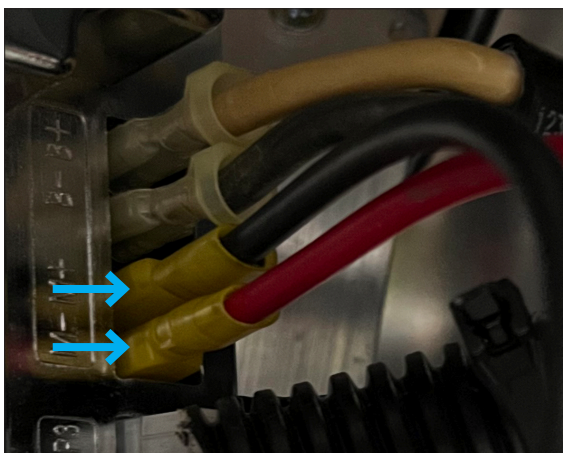
- a.) Install the supplied 309899 mounting plate using the 80083 screws  
 b.) Install the new 63091 controller onto the mounting plate using the top left and bottom right holes.

6



- Disconnect the following 5 wires and remove:  
 a.) Two white wires with red end female connectors  
 b.) One black and One yellow wire loomed together  
 c.) Controller harness

7



Locate the two existing Black and Red wires coming out of the motor. Trim the female contact terminals.

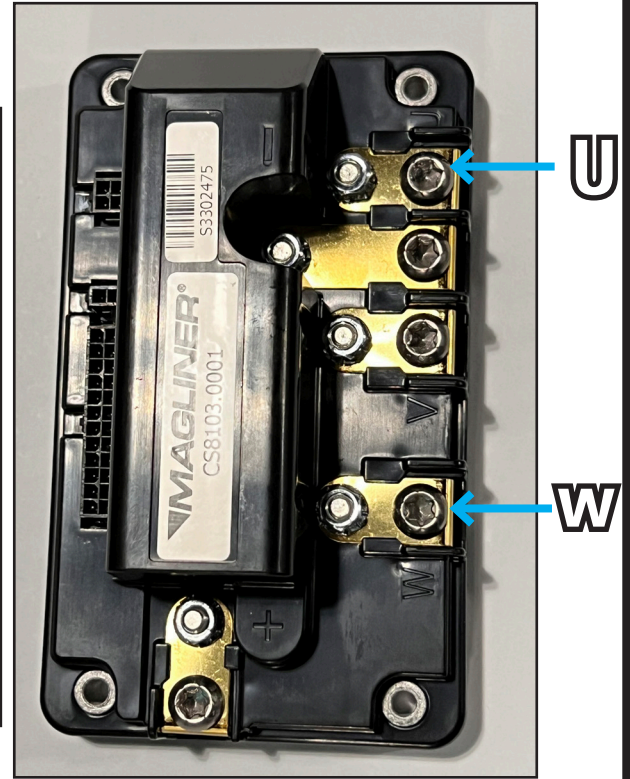
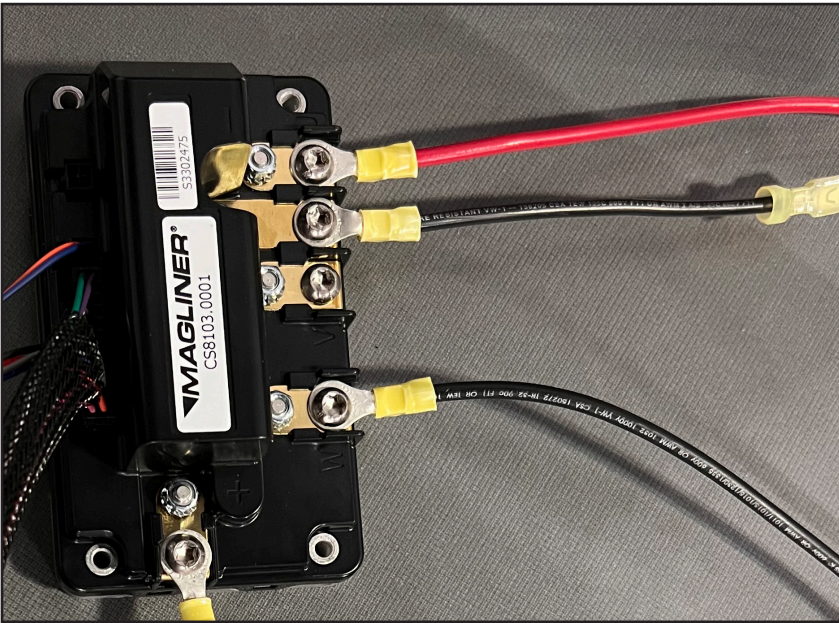
8



Attach the 61112 round end terminal to replace the female end connector. Crimp the connector to the wire as illustrated.

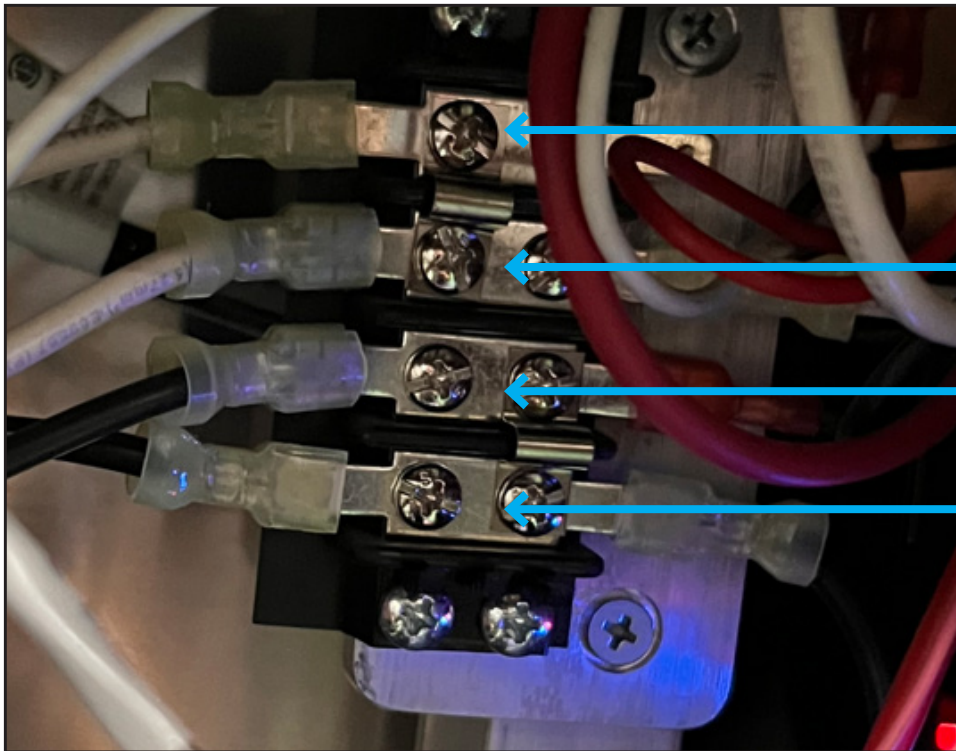


9



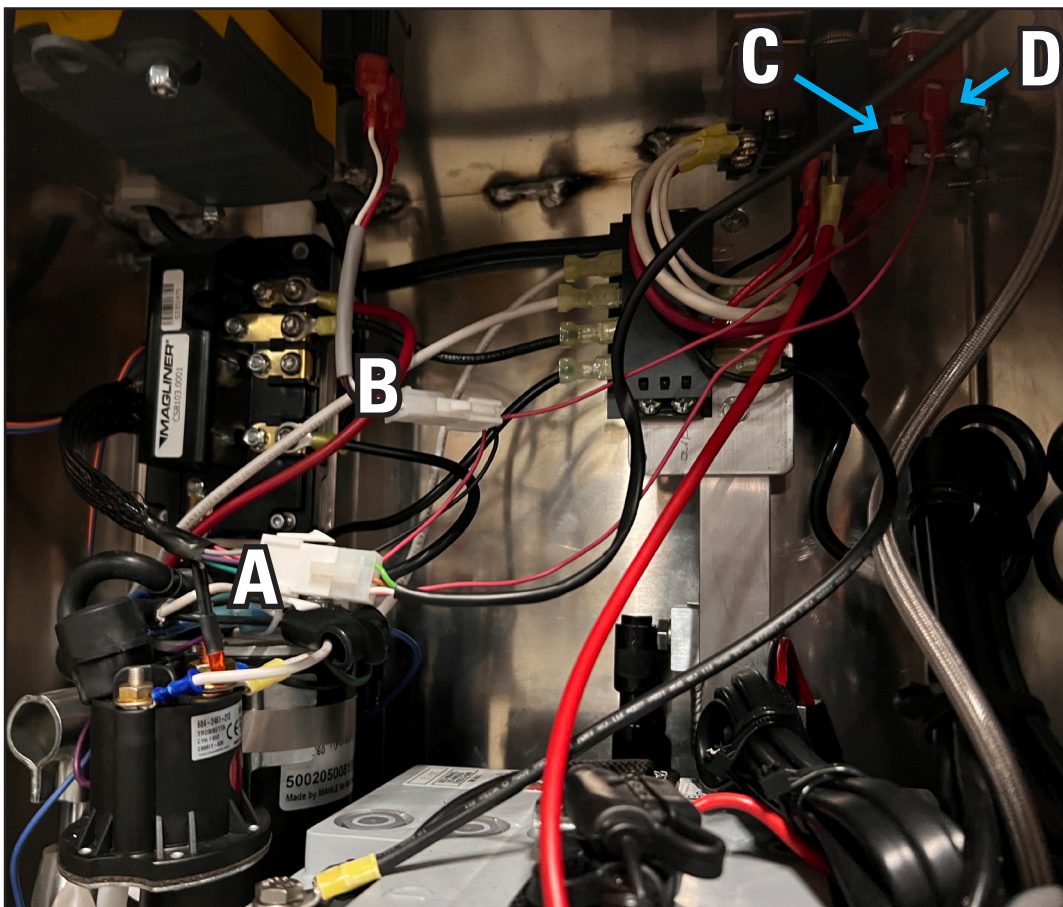
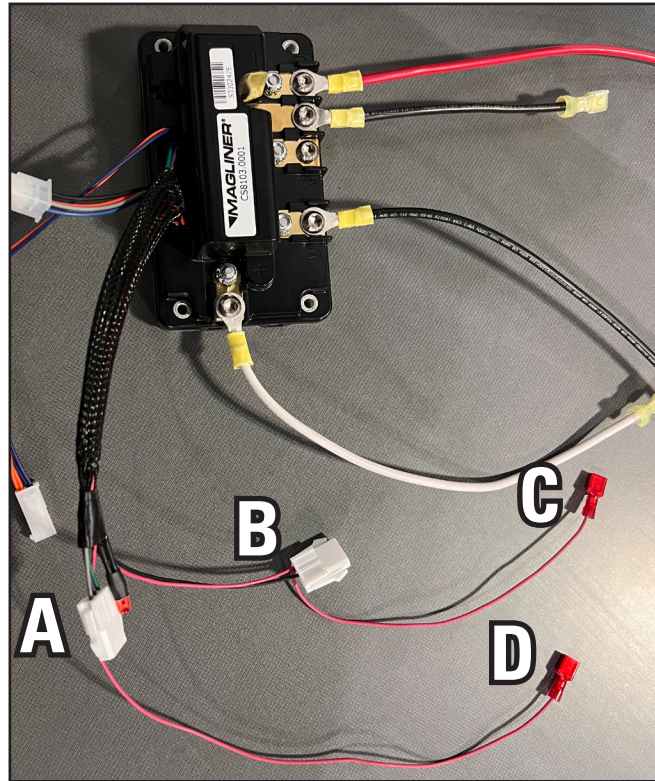
Connect the positive and negative wires as illustrated. (The red wire connects to the "U" slot and the black wire connects to "W" slot.)

10



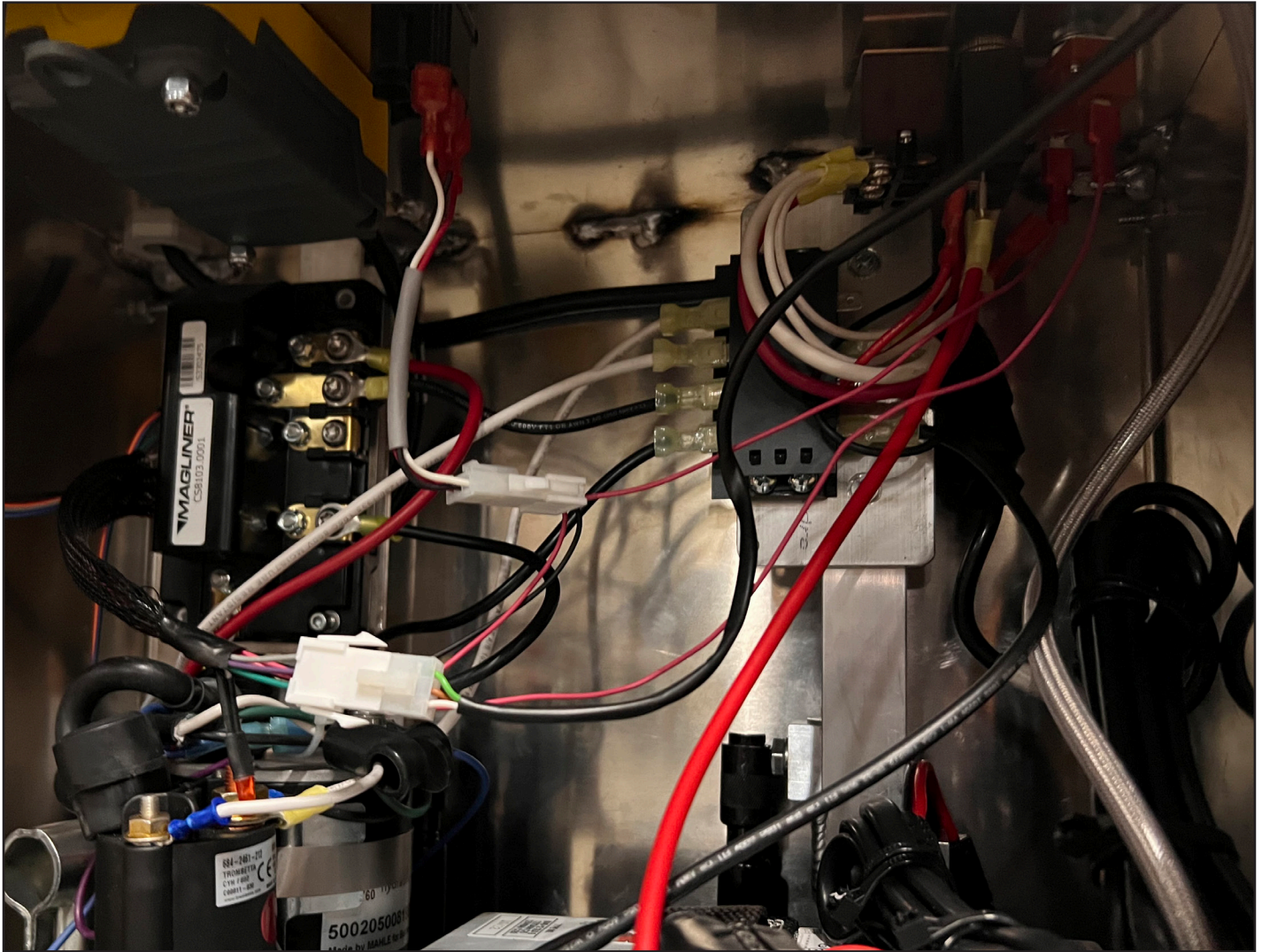
- a.) Connect the top black wire from the controller to the 3rd terminal strip
- b.) Connect the bottom white wire from the controller to the 2nd terminal strip





Connect connector "A" to the wire coming out of the throttle, "B" to the forward/reverse switch, "C" to the back end of the on/off propulsion switch and "D" to the front end of the on/off propulsion switch.





Once the wiring is complete (shown above), reinstall the battery charger.