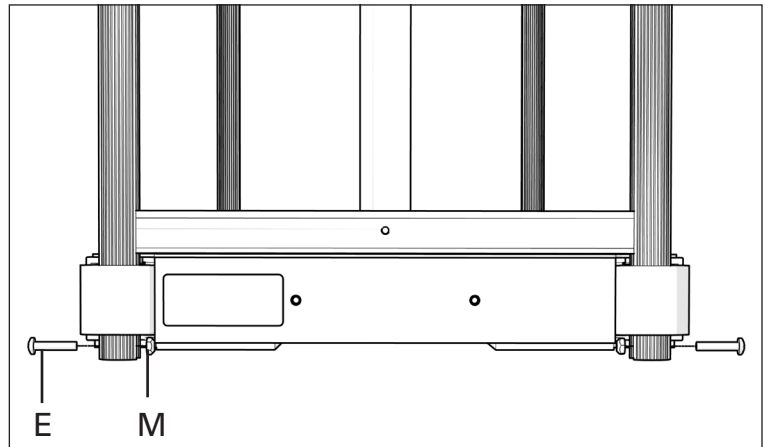
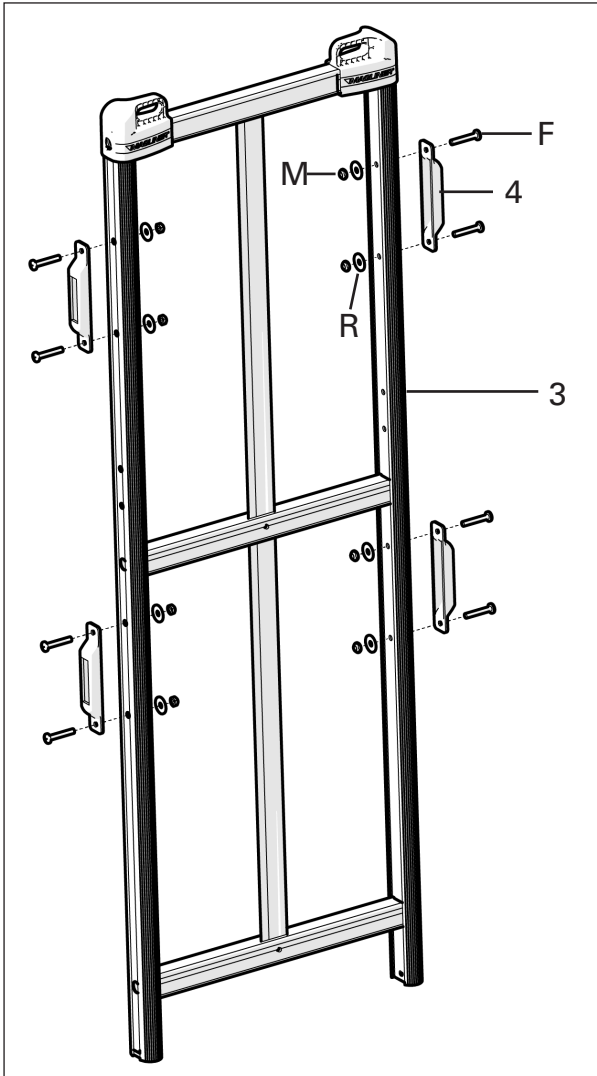


MOTORIZED U-BOAT PART DIAGRAMS

End Rack

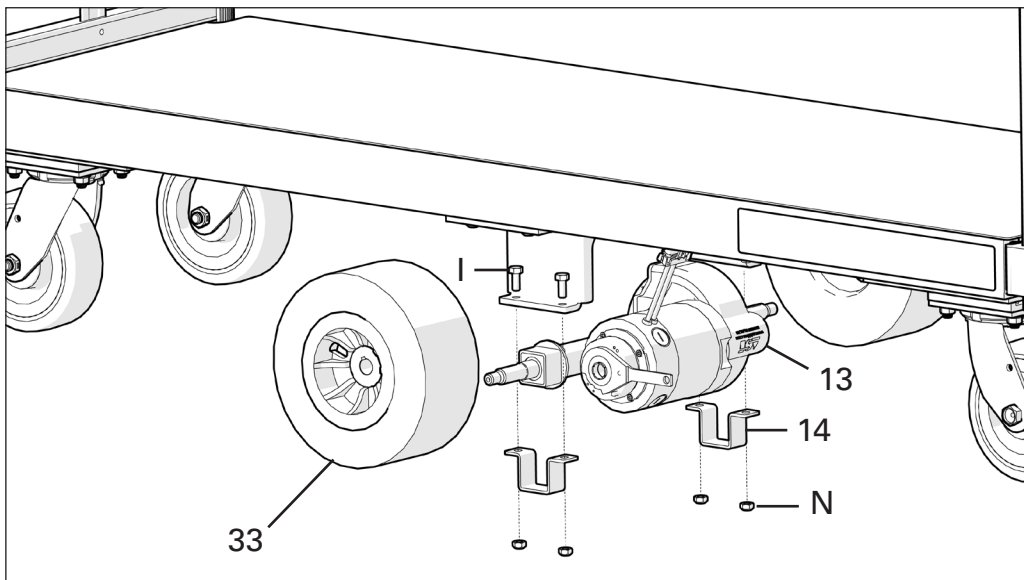
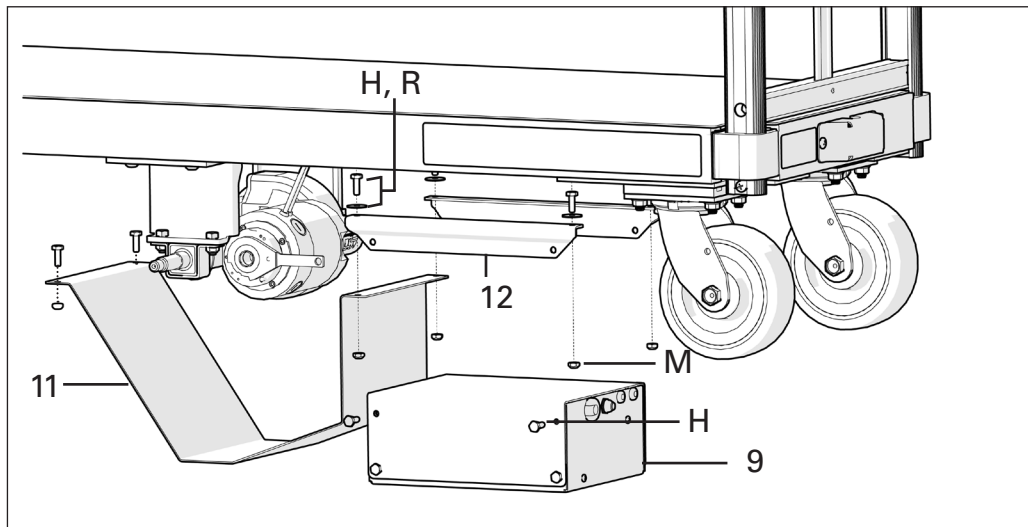


Item	Description	Part Number
3	End rack (handle) for Motorized U-Boat	460033
F	Pan-head machine screw - 1/4"-20 x 1-1/2" long	80105
4	Mag-Loc® anchor	302920
R	Flat washer - 1/4" ID x .88" OD x .047" thick	80735
M	Hex lock nut - 1/4"-20	80675
E	Pan head machine screw - 1/4"-20 x 1-1/4" long	80104

TOOLS REQUIRED

- (1) #3 PHILLIPS SCREWDRIVER
- (1) 7/16" WRENCH

Transaxle Area



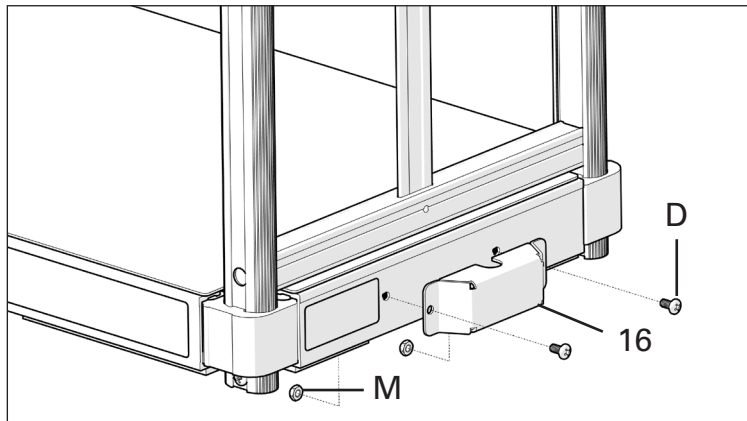
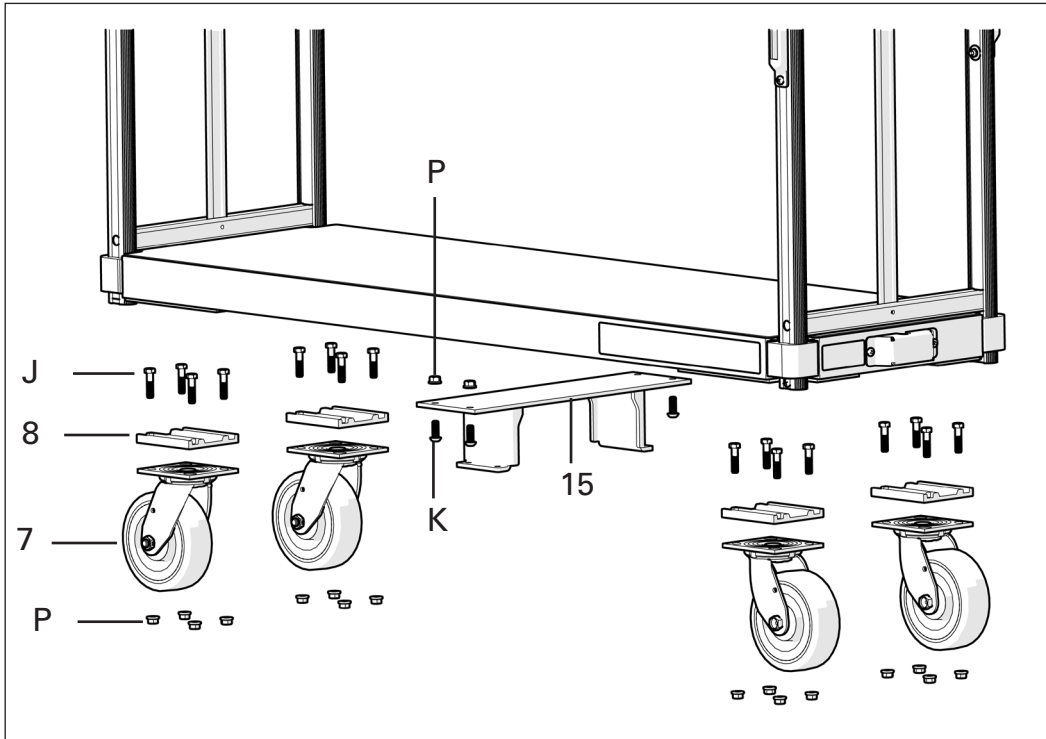
NOTE: Transaxle must be assembled so that the motor brake lever is on the LH side of the deck when standing at the throttle handle.

Item	Description	Part Number
9	Battery box assembly	440019
11	Transaxle guard plate	460024
H	Hex head cap screw - 1/4"-20 x 3/4" long	80000
R	Flat washer - 1/4" ID x .88" OD x .047" thick	80735
12	Battery box mount rail	460007
M	Hex lock nut - 1/4"-20	80675
I	Hex head cap screw - 5/16"-18 x 3/4" long	80010
13	24V transaxle with 400W motor, 19.5:1 gearbox	63060
14	Transaxle mount bracket	440003
N	Hex lock nut - 5/16"-18	80676
33	Solid-fill pneumatic wheel/hub assembly	12934

TOOLS REQUIRED

- (2) 7/16" WRENCHES
- (2) 1/2" WRENCHES

Lower Area

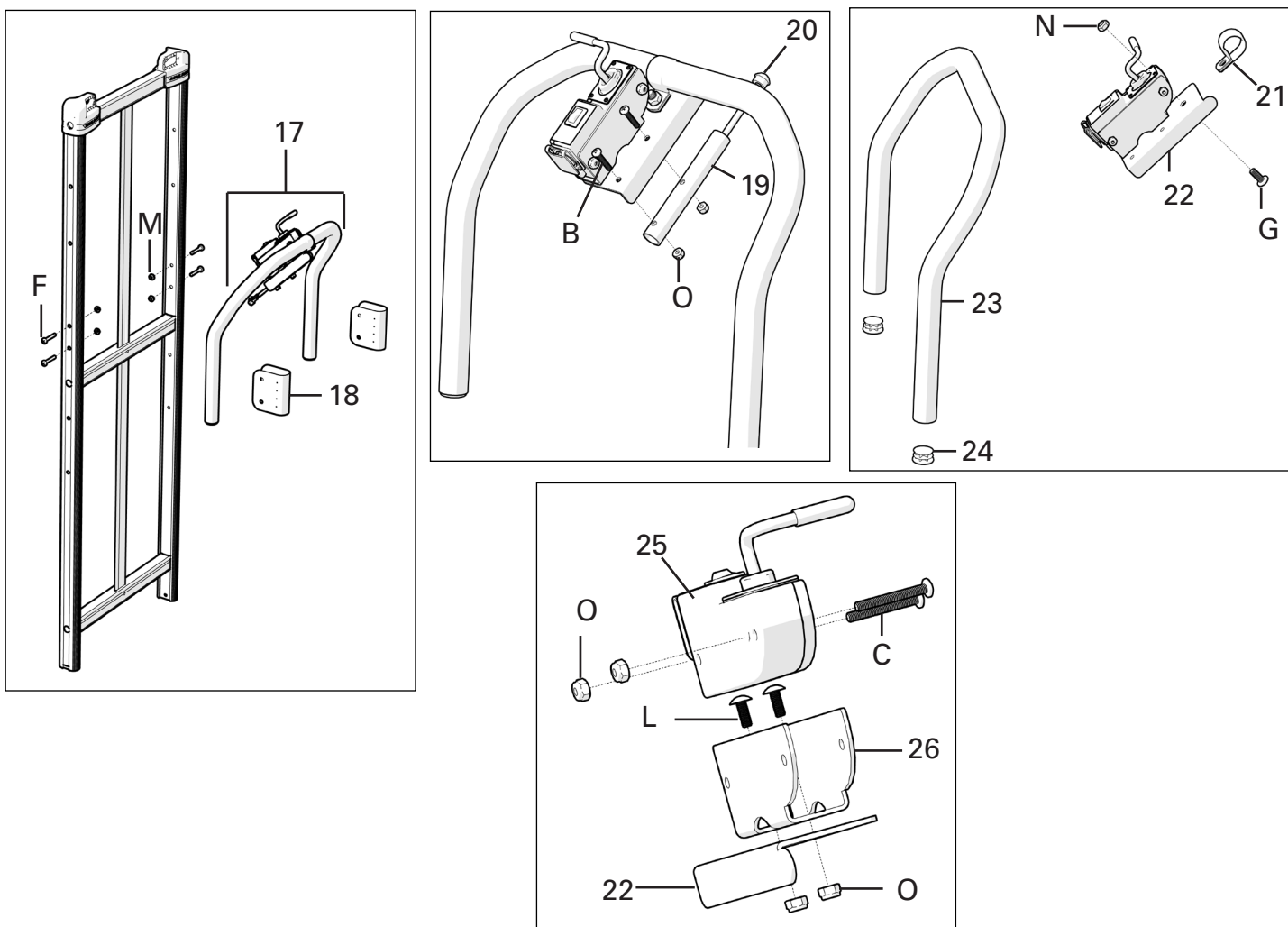


Item	Description	Part Number
J	Hex head cap screw - 3/8"-16 x 1-1/2" long	79988
8	Caster spacer plate	460010
7	Caster - 6" x 2" swivel gray TPR with flat tread	130066
P	Hex lock nut with flange - 3/8"-16	80624
K	Button head cap screw - 3/8"-16 x 1" long	80085
15	Transaxle weldment assembly	460004
M	Hex lock nut - 1/4"-20	80675
D	Pan-head machine screw - 1/4"-20 x 1/2" long	80139
16	Wire protection bumper	460026

TOOLS REQUIRED

- (1) 7/16" WRENCH
- (1) #3 PHILLIPS SCREWDRIVER
- (2) 9/16" WRENCHES
- (1) 7/32" ALLEN WRENCH

Throttle Assembly

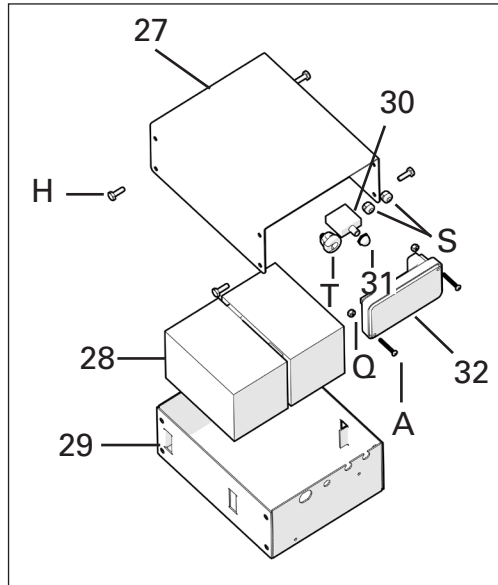


Item	Description	Part Number
17	Throttle mount assembly (includes all parts EXCEPT parts B-D)	460034
M	Hex lock nut - 1/4"-20	80675
F	Pan-head machine screw - 1/4"-20 x 1-1/2" long	80105
18	Handle mount bracket	460014
O	Hex lock nut - 10-32 UNF with nylon insert	80684
19	Dead man's switch tube	306211
20	Dead man's switch button	64073
B	Pan head machine screw - 10-32 UNF x 1" long	80123
N	Hex lock nut - 5/16"-18	80676
21	Throttle mount clamp	306209
22	Throttle mount plate	460025
G	Pan head recessed screw - 5/16"-18 x 3/4" long	80338
23	Ergo loop handle	460015
24	Handle plug	304270
25	Throttle assembly with wiring harness	440001
C	Pan head machine screw - 10-32 UNF x 1-1/2" long	80117
L	Truss head machine screw - 10-32 UNF x 1/2" long	80348
26	Throttle holder bracket	460009

TOOLS REQUIRED

- (1) 7/16" WRENCH
- (1) #1 PHILLIPS SCREWDRIVER
- (1) #3 PHILLIPS SCREWDRIVER
- (1) 3/8" WRENCH

Battery Box Assembly



Item	Description	Part Number
Battery Box Assembly (includes all items below)		440019
27	Battery box lid	440021
H	Hex head cap screw - 1/4"-20 x 3/4" long	80000
28	Battery cell (2 required per battery box) - 12V, 12Ah lead acid	61075
29	Battery box	440020
30	Circuit breaker - 30A	62037
S	Strain relief bushing - 1/2" diameter	62028
T	Strain relief bushing - 7/8" diameter	62081
31	Boot for circuit breaker	61138
32	Controller - 24V, 70A for Motorized U-boat	63049
A	Pan head machine screw - 8-32UNC x 1-1/4" long	80166
Q	Lock nut - 8-32 with nylon	80617

TOOLS REQUIRED

- (1) 3/8" WRENCH
- (1) #3 PHILLIPS SCREWDRIVER
- (1) 7/16" WRENCH

Magline, Inc. - 1205 West Cedar Street - Standish, MI 48658
 (800) 624.5463 - www.magliner.com